

NORDUnet Operational meeting 3 of April 2013

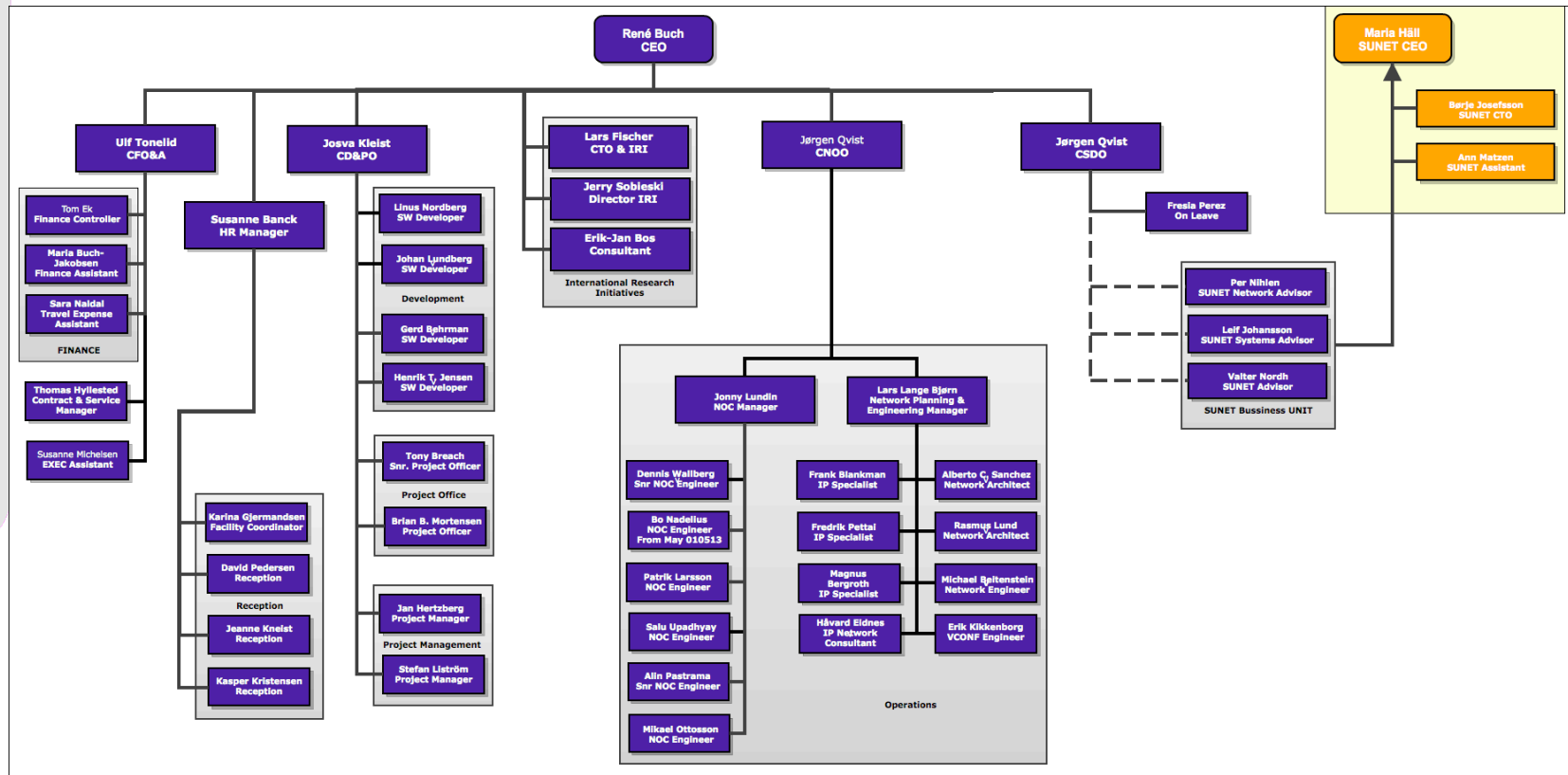
Jonny Lundin

- 10.00 to 10.15 Introductions and setting the agenda
- 10.15 – 12.30 NREN Operational updates (each update 20 min)
- 12.30 – 13.15 Lunch
- 13.15 – 14.00
 - TF-NOC update – SL
 - GN3 and GN3+ – LF

- 14.00 – 14.30 NORDUnet general updates
 - PRISM Tender update
 - Splunk
 - Other ongoing tenders
- 14.30 – 15.30 Service discussion
 - Adobe connect
 - Box
 - Ticket systems
 - Other services
- 15.30 – 16.00 AOB and next meeting

- Mikael Ottosson NOC Eng Sept 12
- Jonny Lundin NOC Mgr Oct 12
- Bo Nadelius NOC Eng starts May 2013
- Alex D left March 2013

- Team:
 - Jonny Lundin
 - Salu Upadhyay
 - Dennis Wallberg
 - Mikael Ottosson
 - Alin Pastrama
 - Patrik Larsson



- Major outages
 - MX 80 Juniper bug
 - 20 Dec - 31 out of 33 MX80 routers rebooted at 10.19 UTC to 10.24 UTC
 - NETAPP outage
 - 20 Dec – NETAPP outage post planned work
 - SUNET Adobe Connect outage - post planned work
 - 17:00 - 20/01/2013 to 00:23 - 25/01/2013
 - Google outage - post planned work – Routing update
 - 07/02 - 23.44 – 09.22
 - LDAP security incident
 - The reason for the intrusion was an vulnerable version of the phpLDAPadmin installed on the ldap2 server.
 - 2013-03-02 23.58 to 2013-03-04 17:00

- Incidents – customer impacting

	Incidents	Preventable
• 2012 W51:	11	64%
• 2012 W52:	3	33%
• 2013 W1:	4	0%
• 2013 W2:	10	10%
• 2013 W3:	12	18%
• 2013 W4:	10	30%

- Most common cause of preventable incidents

- Planned work going wrong
- No power backup/UPS didn't last

- Reduce - Incidents
 - Improved change control
 - Proactive programs – Router failover test etc
- Project control and structure
- Improved BCP planning

- IPNETT: New routines have been implemented with IPNETT to faster react on SW bulletins and alerts. Juniper service NOW demo has also been held, which is under evaluation.
- Telenor: Fibre quality improvement project is on-going by Telenor.
- Level 3: Nothing to report.
- Alacatel Lucent: 40Gig link recovery times: Alacatel has provided a method to speed up the recovery time process post a link break, currently it could have up to 1 H recovery time. The new process to speed up the recovery time has not yet been tested in the network.

- Eduroam Handover
- Adobe Connect V9 upgrade – SUNET, UNINETT, FUNET
- NCS Peer migration – Migration of local router to centralised peering configurations for the Internet exchange points.

- Upcoming projects
 - 100 Gig project SUNET Luleå - Stockholm
 - FW Migration NORDUnet
 - Host review NORDUnet
 - Confluence review

- Risk register implementation
- MINOR Service request – function
- BCP review completed for NUNOC March 2013

- JIRA TTS Split – Feb 2013
 - Improved functionality
 - Ticket severity

- Status December 2012:
- 10G is-rey <> dk-uni
- 2.5G is-rey2 <> uk-hex
- 2x1G is-rey <> us-man

- January 2013:
- 2x1G is-rey <> us-man decommissioned

- March 2013:
- 10G is-rey <> dk-uni moved to 10G is-rey2 <> dk-ore2 (after the initial plan for is-rey2 <> dk-uni did not work)
- 2.5G is-rey2 <> uk-hex moved to 2.5G is-rey <> uk-hex

- Status April 2013:
- 10G is-rey2 <> dk-ore2 (fiber route via UNI)
- 2.5G is-rey <> uk-hex