



Microsoft®
System Center
User Group Sweden 

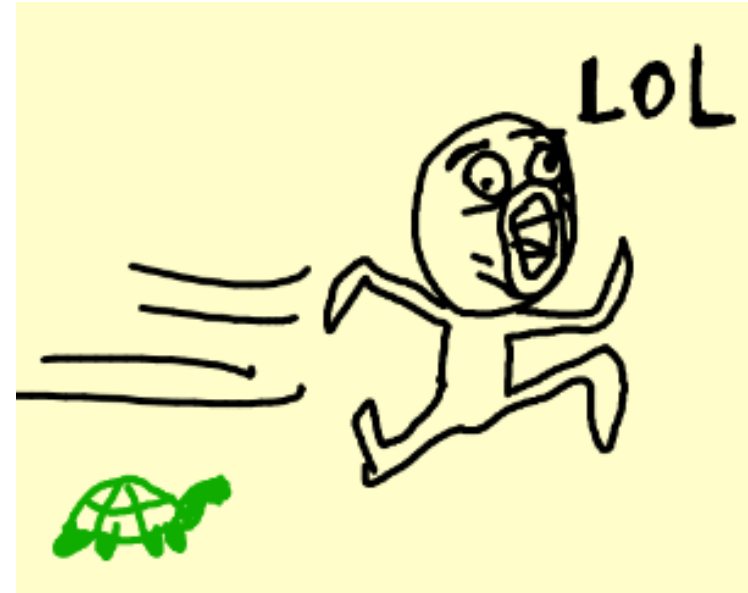
What's new in Configuration Manager 1702
and beyond

Jörgen Nilsson

Releases since summer of 2016

- Configuration Manager 1606 CB
- Configuration Manager 1606 TP
- Configuration Manager 1607 TP
- Configuration Manager 1608 TP
- Configuration Manager 1609 TP
- Configuration Manager 1610 CB
- Configuration Manager 1610 TP
- Configuration Manager 1611 TP
- Configuration Manager 1612 TP
- Configuration Manager 1701 TP
- Configuration Manager 1702 CB
- Configuration Manager 1702 TP
- Configuration Manager 1703 TP
- Configuration Manager 1704 TP

=Awesome development!



Configuration Manager LTSB

- Also available as of the new release is a long term servicing branch (LTSB) release of Configuration Manager
 - **It is a very limited functionality release!**
 - Removes most features that rely on cloud access, such as Intune integration, Windows 10 CB and CBB management, Updates and Servicing, Asset Intelligence, cloud distribution points, etc.
 - Limited client builds are supported, and no new operating systems are expected to be supported
 - Supported for 10 years without updates

When to Use Configuration Manager LTSB

- Realistically only for customers who let their Software Assurance lapse, and legally must removed the existing installed version, such as Configuration Manager 2012 R2 SP1
 - Other than that, ALWAYS remain on current branch
 - Can convert from LTSB to current branch if necessary

Technical Preview

Production versus Technical Preview

- Production sites have production ready updates available to them
 - Not technical preview builds
- Technical preview sites have technical preview (early release) builds available
 - Not production ready builds
- Technical previews offer a glimpse at what “may” be released to “production” in some future production ready release
 - No guarantee that anything in a technical preview release ever moves to a production build
 - However the expectation is that they will eventually be included in a production release

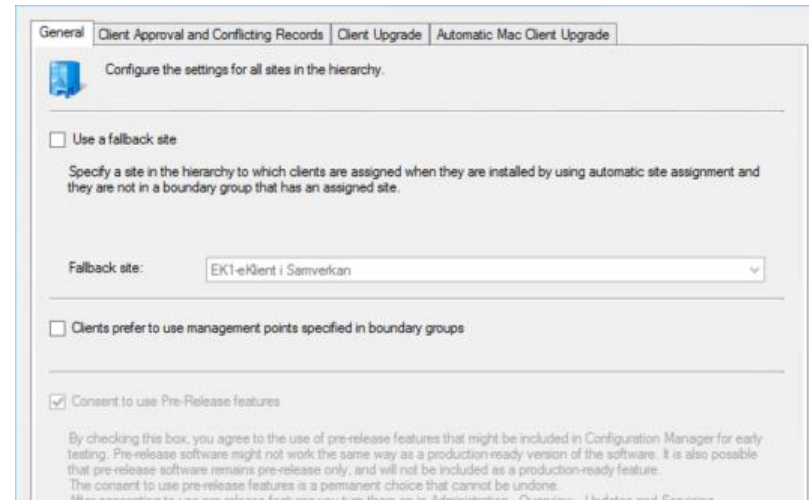
How do I install updates in Technical Preview sites?

- The Updates and Servicing node is your friend 😊
- The same process as production sites, just different update packs applicable
 - Production updates are never applicable for TP
 - TP updates are never applicable for production
 - However the update process is exactly the same
 - One exception, as technical preview sites do not support offline mode as production sites do
 - So technical preview sites are only supported in online mode

Pre-release features

Pre-Release Features

- Fully functional features ready for production.
- Why still in Pre-release? Not tested enough in scale or some critical features still not present.
- If you need/want one of the features enable Pre-release features in your site.
- Provide feedback!



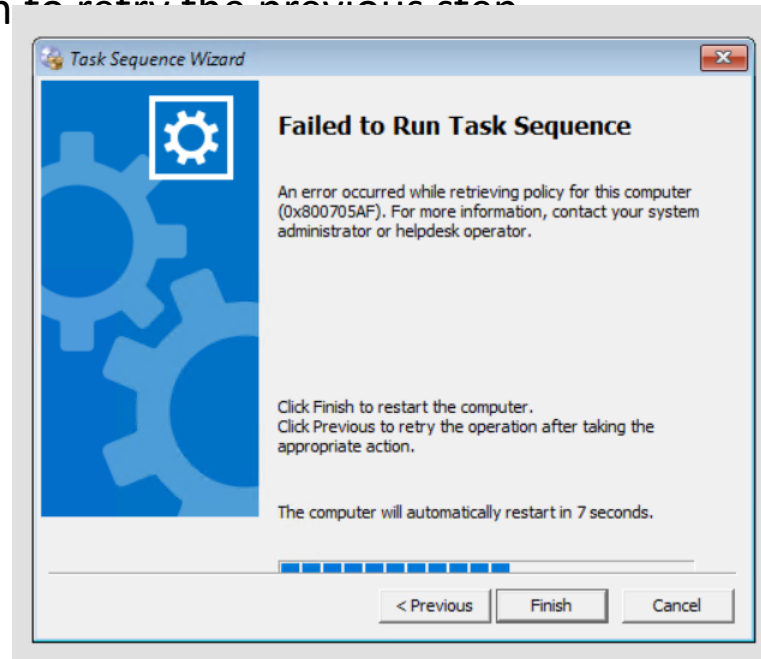
What's new 1702!

Version 1702 drops support for the following products!

- **SQL Server 2008 R2**, for site database servers.
- **Windows Server 2008 R2**, for site system servers and most site system roles.
- **Windows Server 2008**, for site system servers and most site system roles.
- **Windows XP Embedded**, as a client operating system.

Return to previous page when a task sequence fails

- When a task sequence starts you have the option to return to the previous step
- Only applies to:
 - If no TS is available for that computer
 - If a Package is missing on the DP



Express installation files support for Windows 10 updates

- Requires an update to Windows 10 1607 (CU April 2017) or 1703
- Will increase the size of the content downloaded to WSUS / Software Update packages
- Increases the size of the Downloaded updates to the WSUS/DP
- Decreases the size of the amount of data the clients need to download

The screenshot shows the WSUS configuration console with the following settings:

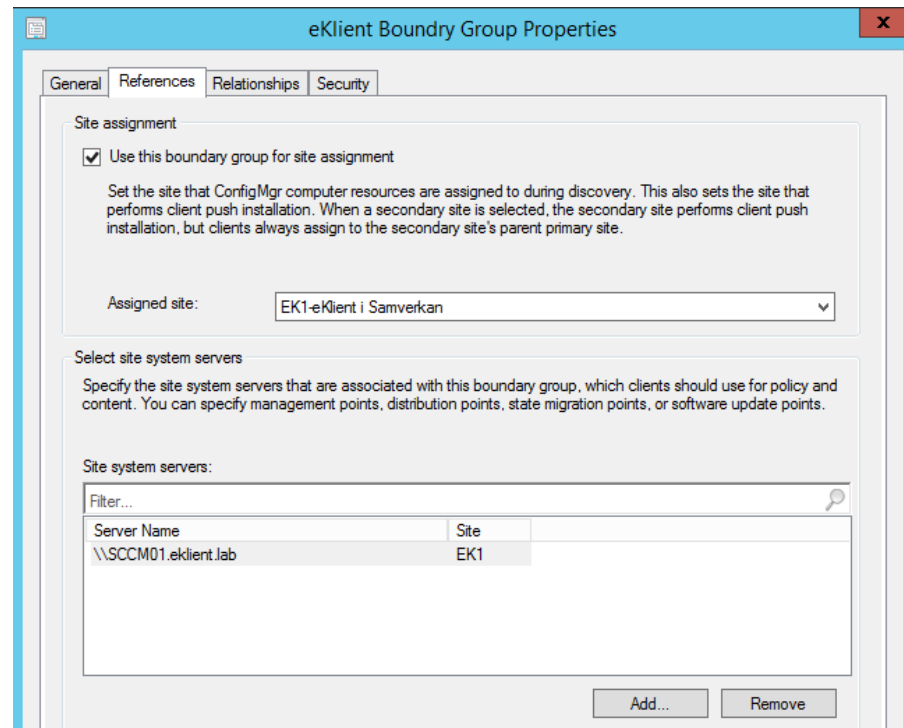
- enable software updates on clients: Yes
- Manage Windows 10 updates with Windows Update for Business: No
- Software update scan schedule: Occurs every 7 days effective 1970-02-01 00:00
- Schedule deployment re-evaluation: Occurs every 7 days effective 1970-02-01 00:00
- When any software update deployment deadline is reached, install all other software update deployments with deadline coming within a specified period of time: No
- Period of time for which all pending deployments with deadline in this time will also be installed: 1 Hours
- Enable installation of Express installation files on clients: No**
- Port used to download content for Express installation files: 8005**
- Enable management of the Office 365 Client Agent: Not Configured

Windows Store for Business support in Configuration Manager

- Makes it possible to deploy Online apps as **Available** from the Windows Store for Business
- Support for line of business apps in Windows Store for Business
- Requires:
 - Windows 10 1703
 - Update for Windows 10 1607

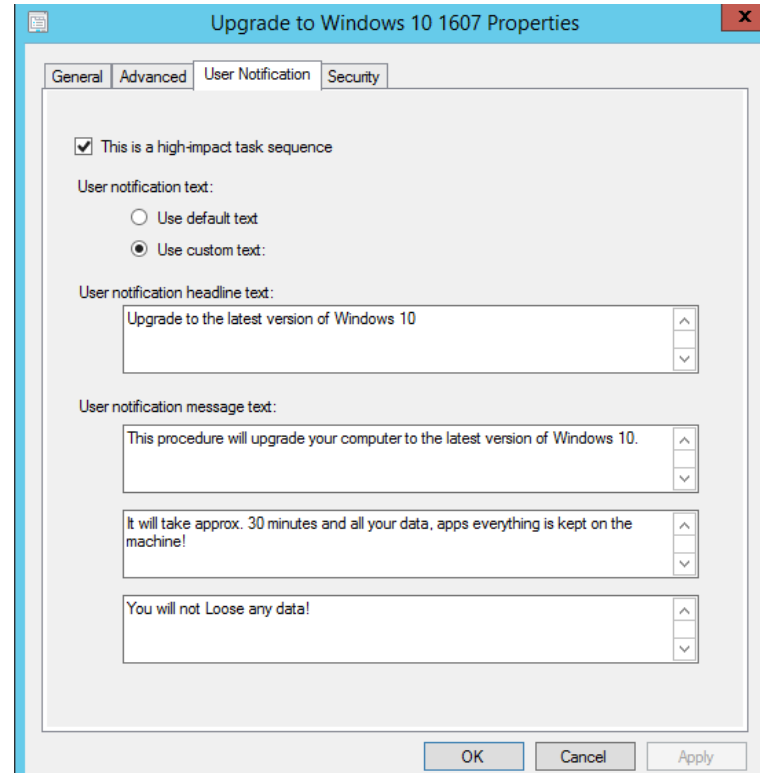
Software update points are added to boundary groups!!

- Probably one of the biggest and most asked for feature from an infrastructure perspective!
- Software Update points are now Boundary aware!
- Eliminates more scenarios where a CAS is required, only small features still left to solve.



Customize high-risk deployment warning

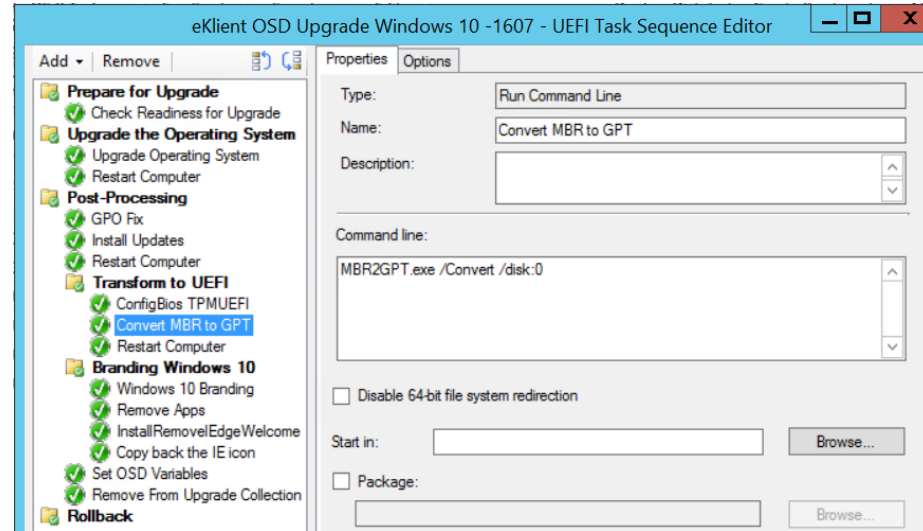
- New default message for all High-Risk deployments
- Possible to create a custom message
- Can also customize the information in Software Center



Convert MBR to GPT during in-place upgrade

- New in Windows 10 1703
- Can convert MBR to GPT on an installed OS
- Built to run from WinPE
- You can use MBR2GPT to convert an MBR disk with BitLocker-encrypted volumes as long as protection has been suspended.
- To resume BitLocker after conversion, you will need to delete the existing protectors and recreate them.

<https://technet.microsoft.com/en-us/itpro/windows/deploy/mbr-to-gpt>



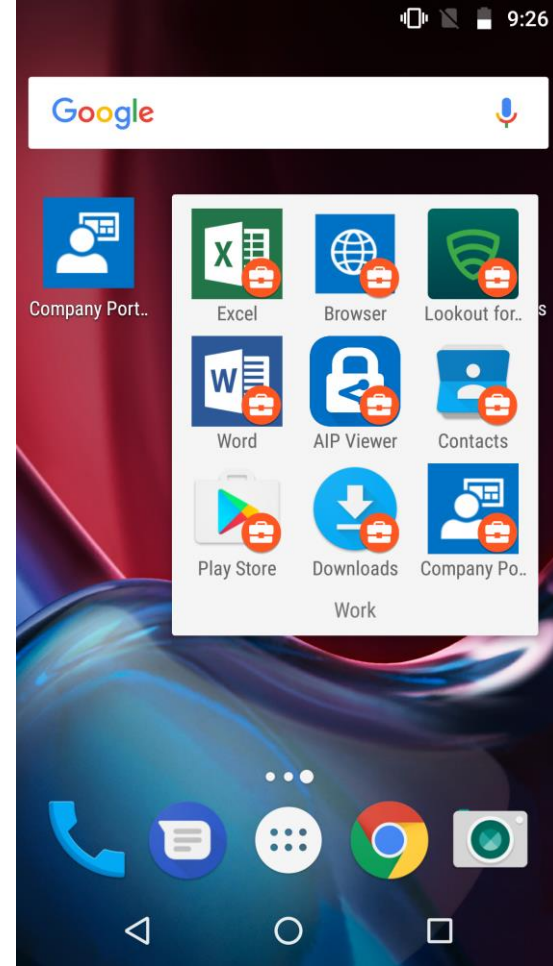
Other changes

- Improvements for in-console search
- Deploy Office 365 apps to clients
- Detect outdated antimalware client versions
- Conditional access for PCs managed by System Center Configuration Manager
- Content Library Cleanup Tool

Intune Hybrid

Android for Work support

- Enroll Android for Work devices
- Approve and deploy Android for Work apps
- Create configuration items for Android for Work
- Selective wipe on Android for Work devices
- Email profiles for Android for Work
- Compliance policies for Android for Work



Apple iOS

Configuration Manager version	App supports device licensing?	Deployment collection type	Claimed license
Earlier than 1702	Yes	User	User license
Earlier than 1702	No	User	User license
Earlier than 1702	Yes	Device	User license
Earlier than 1702	No	Device	User license
1702 and later	Yes	User	User license
1702 and later	No	User	User license
1702 and later	Yes	Device	Device license
1702 and later	No	Device	User license

Other

- Change to configuring multi-factor authentication for device enrollment
- New Windows Hello for Business notification for end users
- Additional iOS configuration settings 42 new settings.
- Lookout Threat Details

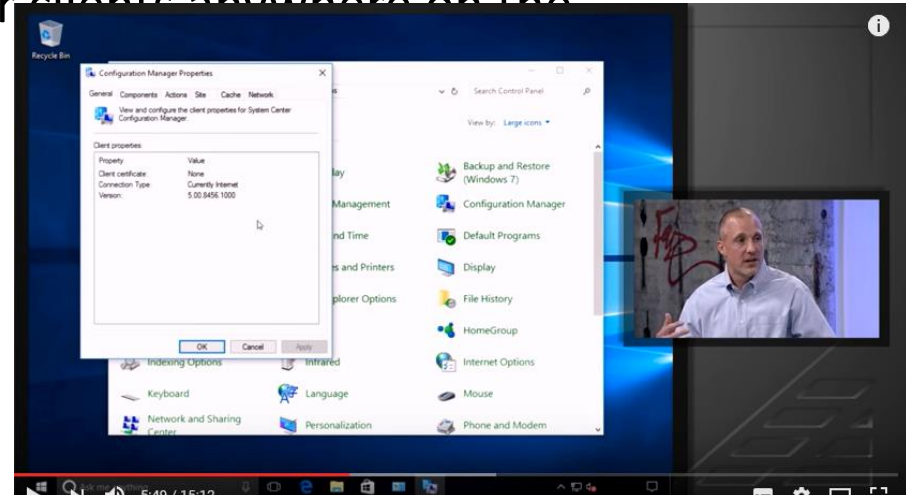
Pre-release 1702

Pre-Release 1702

Name	Feature Type	Status	Description
Pre-release - Data warehouse service point	Pre-release	On	Use the data ware...
Pre-release - Task Sequence content pre-caching	Pre-release	On	Pre-cache content...
Pre-release - Cloud Management Gateway	Pre-release	On	Provides a simple...
Pre-release - Server groups	Pre-release	On	Control settings fo...
Pre-release - Install Behavior for applications	Pre-release	On	Specify a list of ex...
Pre-release - Client Peer Cache	Pre-release	On	Client Peer Cache i...
Pre-release - Device Guard	Pre-release	On	Lets you lock dow...
Pre-release - Microsoft Operations Management Suite (OM...	Pre-release	On	Sync data such as...

Cloud Management Gateway

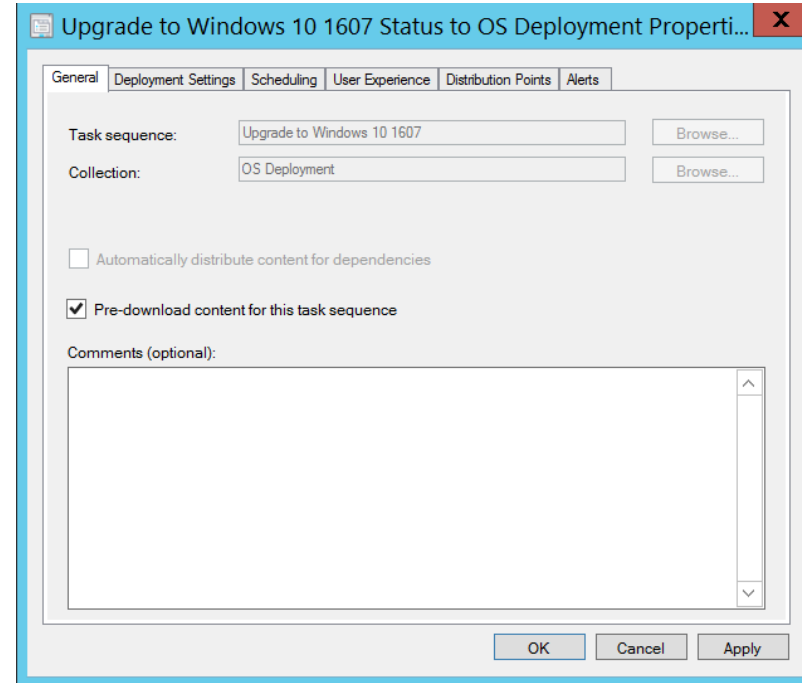
- Supports MP and SUP
- Used together with Cloud DP to provide content
- Manage your Configuration Manager clients anywhere on the Internet
- Requires SSL
- Enables new scenarios!



<https://www.youtube.com/watch?v=3IZskYiZsIU&t=5s>

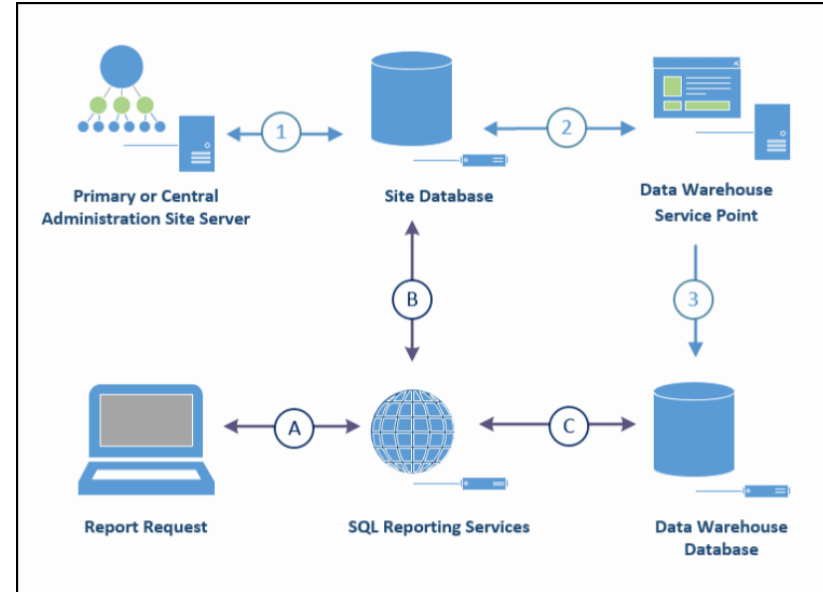
Pre-Cache Task Sequence content

- Pre-cache content for available deployments and task sequences
- Example usage Windows 10 Upgrade



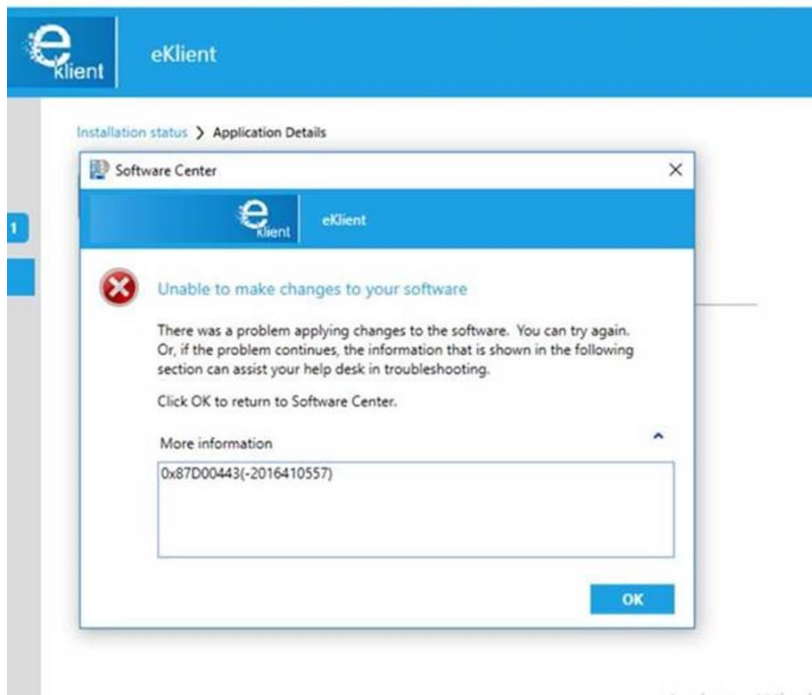
Data Warehouse

- Long term storage of SCCM information
- New historical reports
- Example usage
 - Software Update compliance
 - SCEP historical reporting



Check for running .exe when installing applications

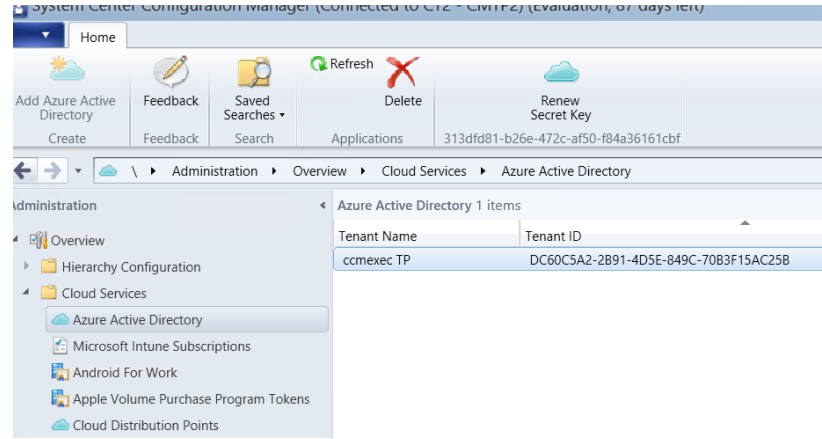
- One of the ideas on User Voice with the most votes!!
- Makes it possible to check if one or more applications is running when deploying an application (only application)
- If deployed to user as available in Software Center a message is displayed to the user.
- If deployed as required without force close of applications it will fail.
- Force close does just that just closes the running apps.



What's new in 1703 TP

Azure Active Directory onboarding (1702TP)

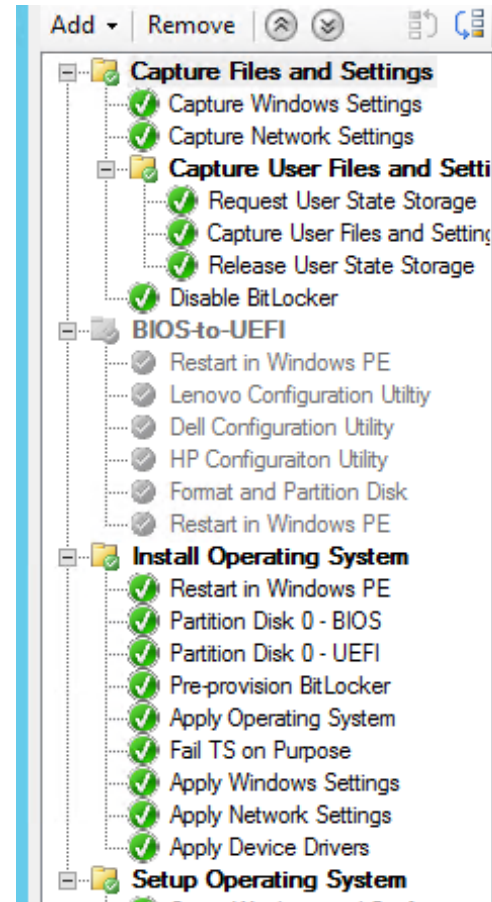
- New feature for onboarding to Azure AD
- Initial use – User policies for computers using the Cloud Management Gateway



RESTful OData endpoint(1702 TP)

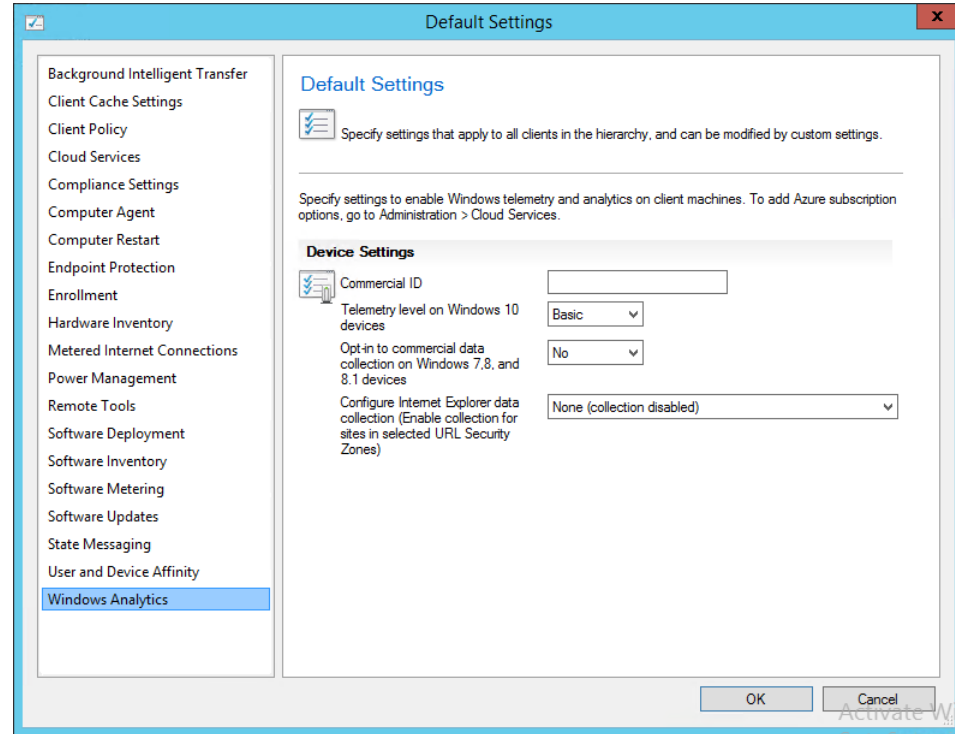
- Makes it possible to access information in Configuration Manager using a Restful API.
- Enabled on Site Systems
- Use your favorite tool to access Configuration Manager data, Excel, PowerBI and so on.
- Read-only access (For now!!)

Collapsible Groups in TS



Windows Analytics

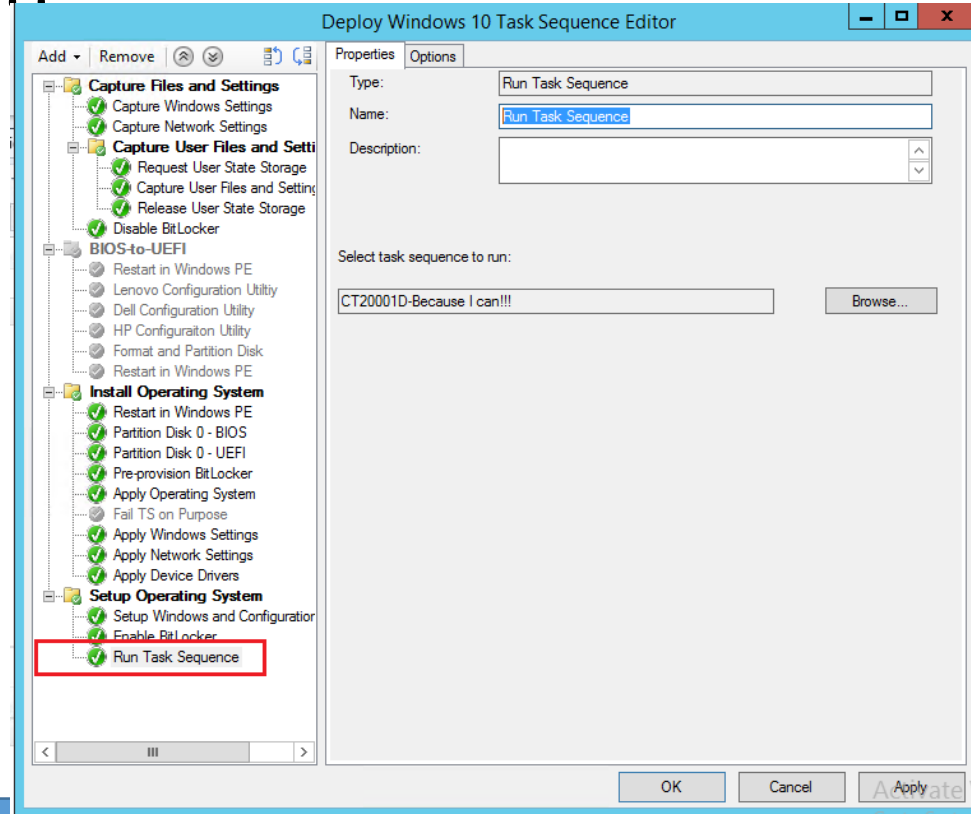
- Is now a client setting
- Proves the investment made in Windows Analytics by Microsoft
- Simplifies deployment



What's new in 1704 TP

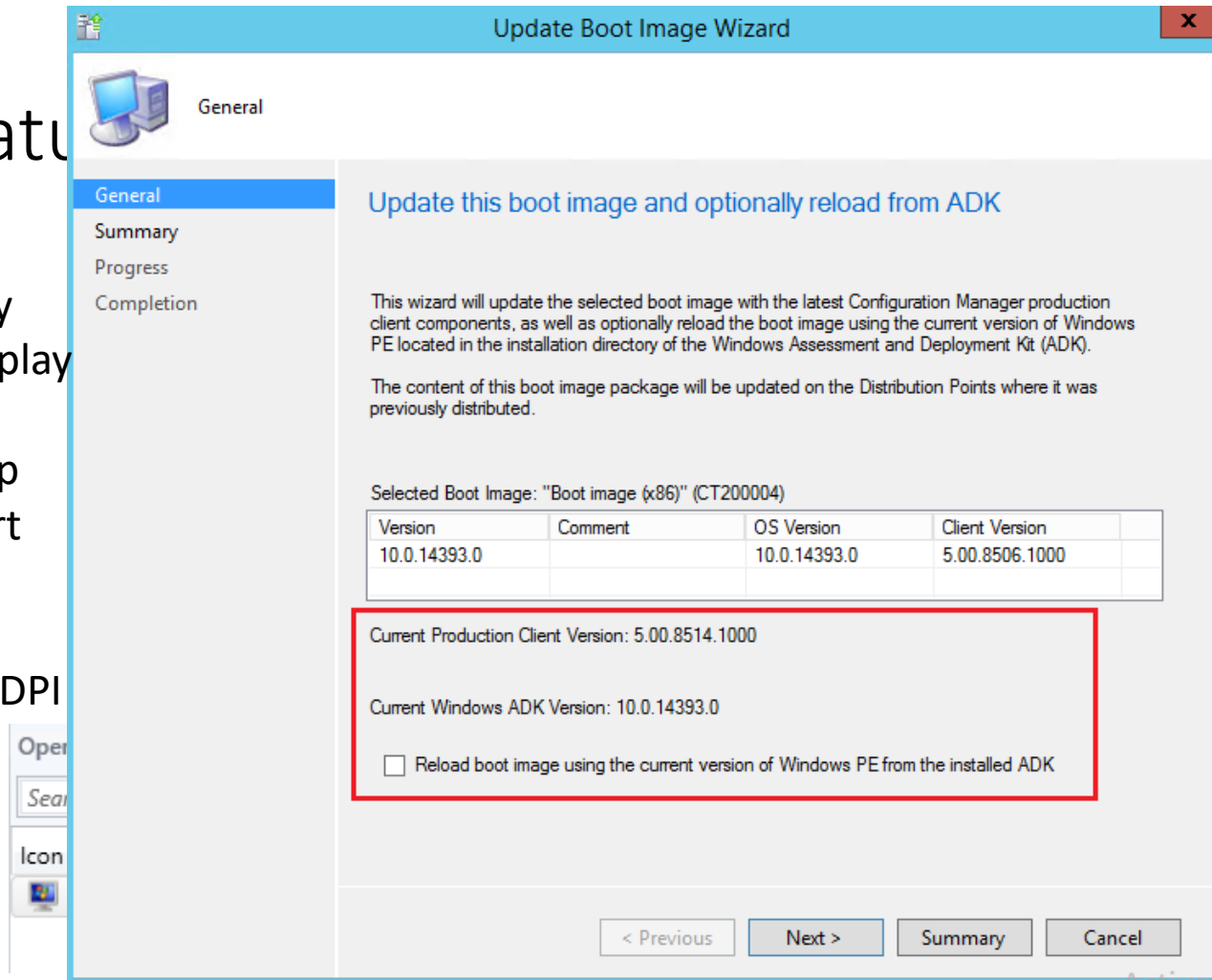
Nested Task Sequence!!

- New "Run Task Sequence" Step
- Some limitations, check to docs
- Great new possibilities with this!



More new features

- Secureboot inventory
- OS Image version display Column
- Android for Work App Configuration support
- Reload Win PE from Installed ADK
- Admin Console High DPI Support
- BIOS-UEFI Duplicates removed





Sponsors



System Center User Group



www.scug.se



www.youtube.com/scugse



[#scugse](https://twitter.com/scugse)