



Microsoft®
System Center
User Group Sweden 

Windows 10 Creators Update

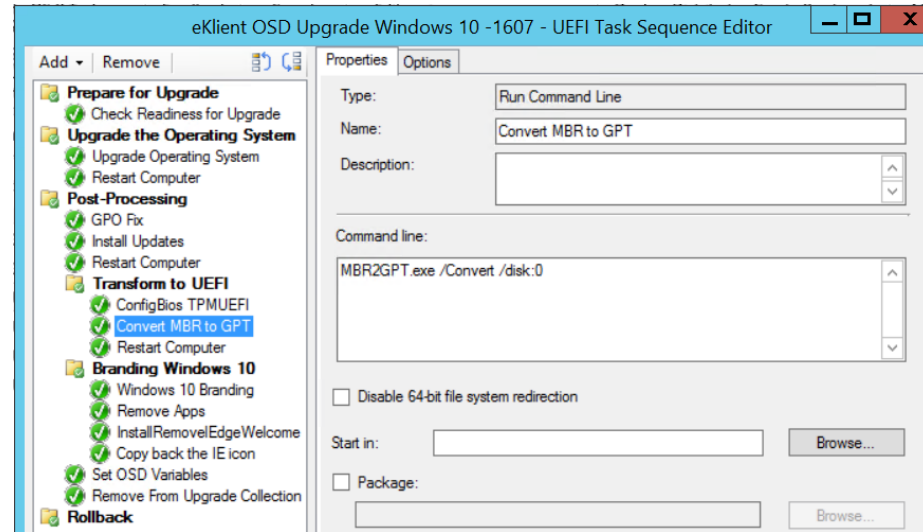
Jörgen Nilsson

Nytt release schema!

- Windows 10, Office 365 och Configuration Manager kommer ha samma release månader!
 - Mars och September varje år kommer nya versioner.
 - Gör det extremt mycket enklare att planera!
-
- <https://blogs.windows.com/business/2017/04/20/windows-office-align-feature-release-schedules-benefit-customers/#GmqUtsbqvFAyoWwG.97>

MBR2GPT

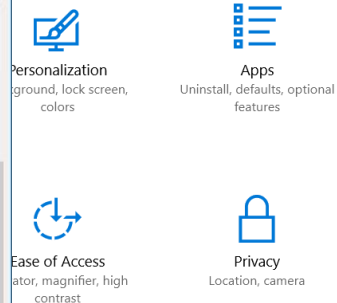
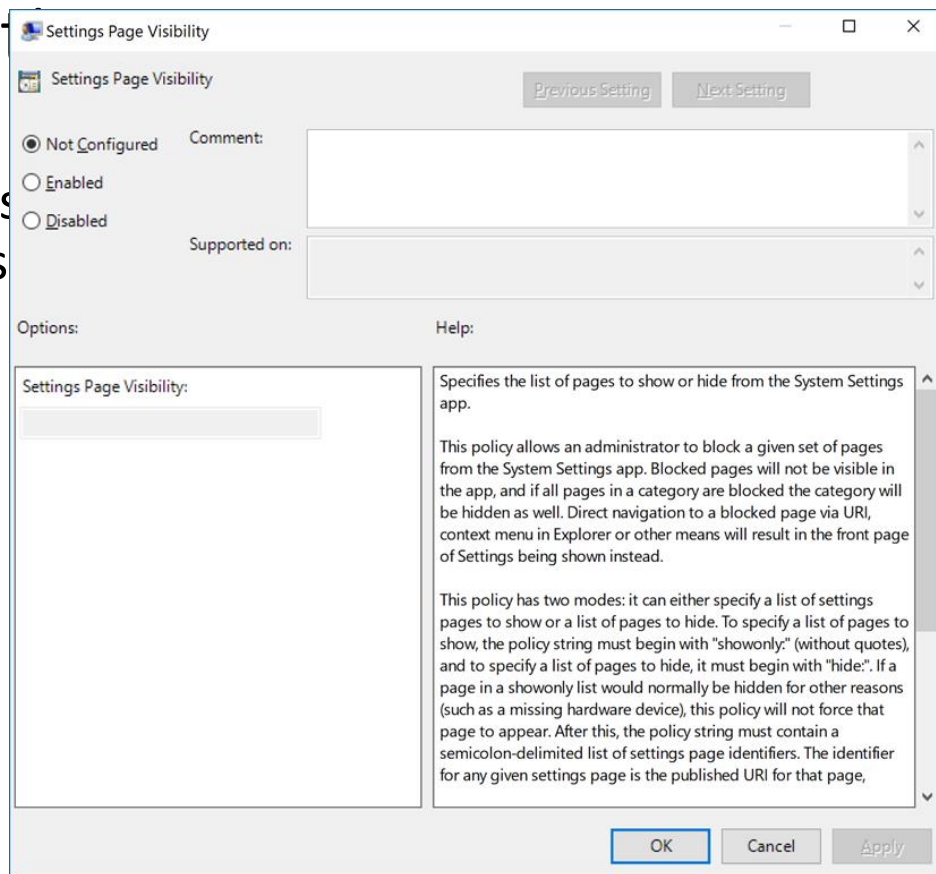
- New in Windows 10 1703
- Can convert MBR to GPT on an installed OS
- Either from WinPE or Full OS
- You can use MBR2GPT to convert an MBR disk with BitLocker-encrypted volumes as long as protection has been suspended.
- To resume BitLocker after conversion, you will need to delete the existing protectors and recreate them.



<https://technet.microsoft.com/en-us/itpro/windows/deploy/mbr-to-gpt>

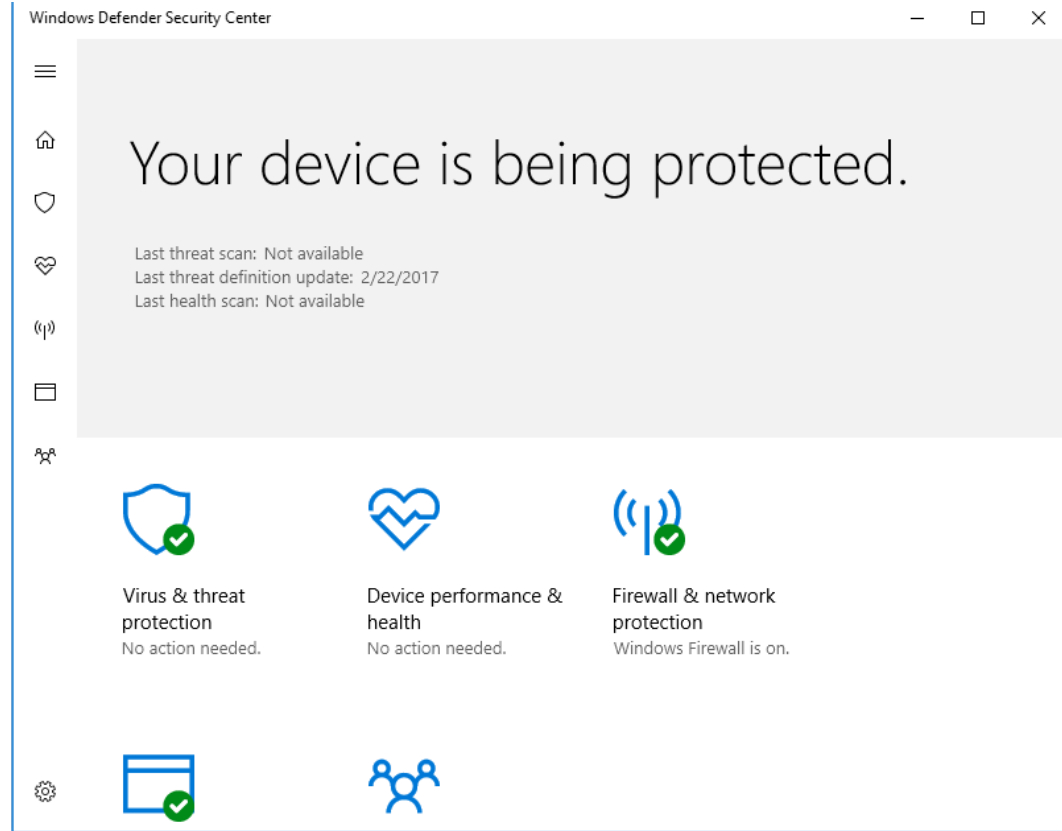
Begränsa Sett

- Svartlista eller vitlista som syns i Settings
- GPO
- MDM



Windows Defender

- Windows Defender Security Center
- Alla säkerhetsfunktioner på ett ställe
- Går att begränsa åtkomst



Windows 10

Click on the logo to display the test series.

Windows 8/8.1

Click on the logo to display the test series.

Windows 7

February 2017

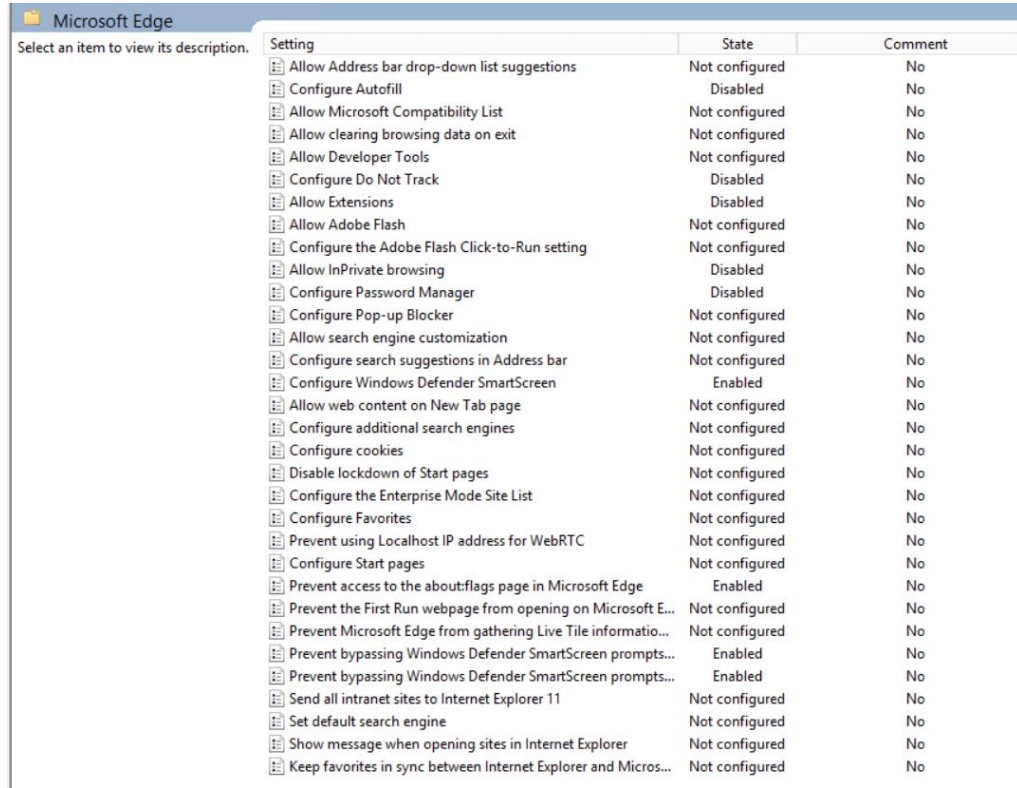
February 2017 (new)

- August 2016
- February 2016
- August 2015
- April 2015
- December 2014
- August 2014
- February 2014
- August 2013
- June 2013
- December 2012
- October 2012
- June 2012
- April 2012
- December 2011
- August 2011

Name	AV-TEST	Protection	Performance	Usability
 AVG AVG Antivirus Business 16		●●●●●○	●●●●●○	●●●●●○ ▶
 Bitdefender Bitdefender Endpoint Security 6.2		●●●●●●	●●●●●●	●●●●●● ▶
 F-Secure F-Secure Client Security 12.30		●●●●●●	●●●●●○	●●●●●○ ▶
 G Data G Data AntiVirus Business 14.0		●●●●●○	●●●●●○	●●●●●● ▶
 Intel Security Intel Security McAfee Endpoint Security 10.2		●●●●●○	●●●●●○	●●●●●○ ▶
 Kaspersky Lab Kaspersky Lab Endpoint Security 10.2		●●●●●●	●●●●●○	●●●●●● ▶
 Kaspersky Lab Kaspersky Lab Small Office Security 5		●●●●●●	●●●●●●	●●●●●● ▶
 Microsoft Microsoft System Center Endpoint Protection 4.10		●●●●●○	●●●●●○	●●●●●● ▶
 Seqrite Seqrite Endpoint Security 17.00		●●●●●○	●●●●●●	●●●●●● ▶
 Sophos Sophos Endpoint Security and Control 10.6		●●●●●○	●●●●●○	●●●●●● ▶
 Symantec Symantec Endpoint Protection 14.0		●●●●●●	●●●●●●	●●●●●● ▶
 Symantec Symantec Endpoint Protection Cloud 22.8		●●●●●●	●●●●●○	●●●●●● ▶
 Trend Micro Trend Micro Office Scan 12.0		●●●●●●	●●●●●○	●●●●●● ▶

Microsoft Edge

- Nya GPO:er
- Synkronisera favoriter mellan Edge & IE
- Ange standardsökmotor
- Ange en startsida utan att den är tvingande
- Adobe Flash click-to-run



Setting	State	Comment
Allow Address bar drop-down list suggestions	Not configured	No
Configure Autofill	Disabled	No
Allow Microsoft Compatibility List	Not configured	No
Allow clearing browsing data on exit	Not configured	No
Allow Developer Tools	Not configured	No
Configure Do Not Track	Disabled	No
Allow Extensions	Disabled	No
Allow Adobe Flash	Not configured	No
Configure the Adobe Flash Click-to-Run setting	Not configured	No
Allow InPrivate browsing	Disabled	No
Configure Password Manager	Disabled	No
Configure Pop-up Blocker	Not configured	No
Allow search engine customization	Not configured	No
Configure search suggestions in Address bar	Not configured	No
Configure Windows Defender SmartScreen	Enabled	No
Allow web content on New Tab page	Not configured	No
Configure additional search engines	Not configured	No
Configure cookies	Not configured	No
Disable lockdown of Start pages	Not configured	No
Configure the Enterprise Mode Site List	Not configured	No
Configure Favorites	Not configured	No
Prevent using Localhost IP address for WebRTC	Not configured	No
Configure Start pages	Not configured	No
Prevent access to the about:flags page in Microsoft Edge	Enabled	No
Prevent the First Run webpage from opening on Microsoft E...	Not configured	No
Prevent Microsoft Edge from gathering Live Tile informatio...	Not configured	No
Prevent bypassing Windows Defender SmartScreen prompts...	Enabled	No
Prevent bypassing Windows Defender SmartScreen prompts...	Enabled	No
Send all intranet sites to Internet Explorer 11	Not configured	No
Set default search engine	Not configured	No
Show message when opening sites in Internet Explorer	Not configured	No
Keep favorites in sync between Internet Explorer and Micros...	Not configured	No

Dynamic Lock

- Use a Bluetooth to sense when you are no longer by the computer.
- Locks screen after a minute "or so" ;-) when bluetooth is out of range

Dynamic lock

Windows can use devices that are paired to your PC to know when you're away.

- Allow Windows to detect when you're away and automatically lock the device

[Learn more](#)

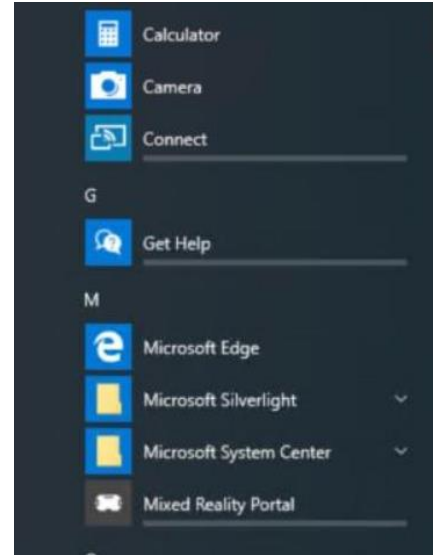
Get-help app - Windows Capabilities

- Get-Help kan inte blockas med Applocker längre
- Lösningen Powershell eller DISM:

*Remove-WindowsCapability -Name -online
App.Support.ContactSupport~~~~0.0.1.0*

- DISM

*DISM /Online /Remove-Capability
/CapabilityName:App.Support.ContactSupport~~~~0.0.1.0*



Windows 10 1703 avinstallerade appar

- 1703 är ny baseline för inbyggda appar
- När man uppgraderar till 1703 kommer inte de appar som användaren har avinstallerat installeras på nytt.
- Från och med 1709 (?!?!?!?) kommer appar som avinstallerats av administratörer inte heller installeras igen.

Express Updates

- Minska mängden data som laddas ned av en klient
- Istället för 1GB+ endast det som skiljer sedan senaste CU 50MB >
- Endast
 - Windows 10 1703
 - Windows 1607 April CU

Delivery Optimization eller BranchCache?

- Storleken på Kumulativa uppdateringar i Windows 7/8.1/10
- Storleken på Office 365 uppdateringar
- Nya versioner av Windows 10

Method	Windows Update	Windows Update for Business	WSUS	Configuration Manager
Delivery Optimization	✓	✓	✓	✗
BranchCache	✗	✗	✓	✓

Modern client

- Nya MDM möjligheter
- Azure AD Bulk Join
- Remove Pre-installed software, för att slippa bloatware

Remove pre-installed software

Optional: remove pre-installed software without keeping any user data



Azure Active Directory join in bulk

Using the new wizards in Windows Configuration Designer, you can [create provisioning packages to enroll devices in Azure Active Directory](#). Azure AD join in bulk is available in the desktop, mobile, kiosk, and Surface Hub wizards.

Bulk AAD Token *

Get Bulk Token

Windows Configuration Designer- Store

Store

Home **Apps** Games Music Movies & TV CCMECEC



Windows Configuration Designer

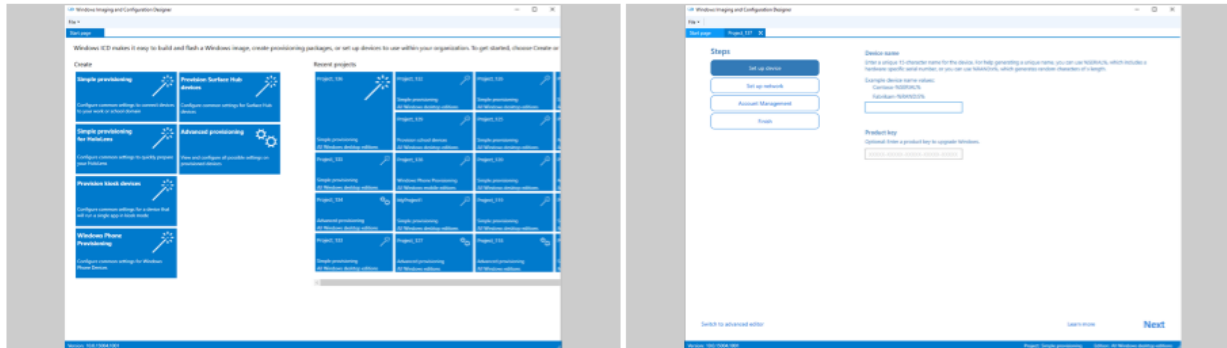
Microsoft Corporation

★★★★★

This product needs to be installed on your internal hard drive.

Windows Configuration Designer is currently not available.

Screenshots



Nytt

Choose privacy settings for your device

Microsoft puts you in control of your privacy. Choose your settings, then select 'Accept' to save them. You can change these settings at any time.

Location

Get location-based experiences like local weather and directions to your favorite places. Let Windows & apps request your location, and send Microsoft location data to help improve location services.

On

Diagnostics

Help us fix things and improve Microsoft products and services. Send diagnostic data (including browser, app & feature usage, and inking & typing data) to Microsoft.

Full

Relevant Ads

Let apps use advertising ID to make ads more interesting to you based on your app usage.

On

Speech recognition

Talk to Cortana and Store apps that support voice recognition. Send Microsoft your voice input to help improve speech services.

On

Tailored experiences with diagnostic data

Get more relevant tips and recommendations to tailor Microsoft products and services for your needs. Let Microsoft use your diagnostic data to make this work.

On

Select 'Learn more' for info on the above settings, how Windows Defender SmartScreen works, and the related data transfers and uses.

[Learn more](#) [Accept](#)

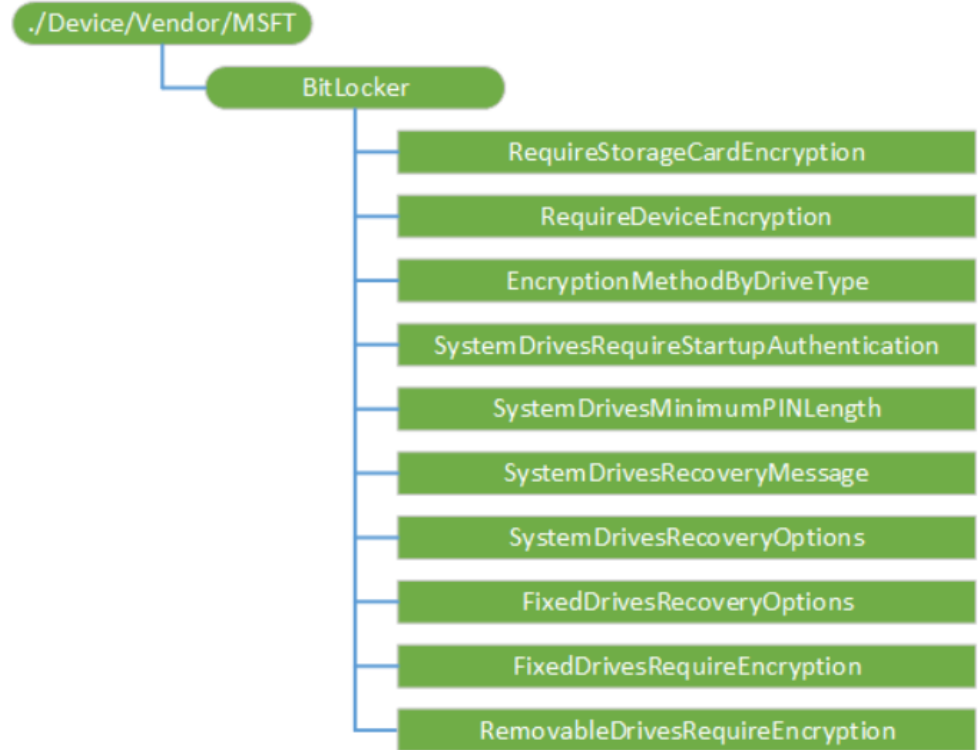
Activate Windows
Go to Settings to activate Windows.

MDM

ADMX Backed CSP

- 300 Nya inställningar via CSP
 - CleanPC CSP
 - Bitlocker CSP
- Stöd för ADMX baserade CSP
 - OS settings: Computer Configuration/A
 - Application settings: User Configurior
- Stöd för Custom .ADMX filer

• <https://msdn.microsoft.com/en-us/windows/hardware/commercialize/customize/mdm/understanding-admx-backed-policies>



ADMX Backed CSP - syntax

Edit Row

OMA-URI Settings - PREVIEW

* Name ⓘ

Description ⓘ

* OMA-URI ⓘ

* Data type ⓘ

* Value ⓘ

```
<Enabled/>
```

MMAT

- Verktyg för att mappa GPO:Er till MDM inställningar
- Förenkla flytten från one-prem till en modern klient miljö

<https://github.com/WindowsDeviceManagement/MMAT>

Warnings - Pre-release product with known limitations

The MDM Migration Analysis Tool (MMAT) is part of a pre-release product. It makes a best effort attempt to understand your domain policies but it has known limitations.

Please read and understand the Caveats and Warnings section of the associated documentation.

Report Information

This report queried Group Policy information from the following user and computer. If your domain has multiple sites/OU's/etc. and targets custom Group Policies to different users and computers, you will need to run the tool against those targets to understand how to migrate them to MDM.

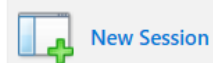
User Name	Computer Name	OS Version	Report Creation Time	MMAT Version
john2	jspaith5-win7a.jspaithtest.com	6.1.7601.65536	01/23/2017 16:40:45	v0.4

Computer Policies

(-) SUPPORTED: Security Account Policies

These Security policies are fully supported by MDM. It should be possible to directly migrate these settings to MDM.

Policy Name	State	GPO Name	Feedback?
MaximumPasswordAge	42	Default Domain Policy	<input type="checkbox"/>
MinimumPasswordLength	7	Default Domain Policy	<input type="checkbox"/>
PasswordHistorySize	24	Default Domain Policy	<input type="checkbox"/>
MaximumPasswordAge	19	AccountLocalServicesRegistry	<input type="checkbox"/>
PasswordHistorySize	19	AccountLocalServicesRegistry	<input type="checkbox"/>



New Session



Start Local Trace



Open



Discussion/Voting



Blog/Videos

Recent Files

Favorite Scenarios

[Edit Favorites](#)

News

[\[All \]](#)

[Local Network Interfaces \(Win 8.1 and later\)](#)

Capture local Link Layer traffic from NDIS. OS: Win...

[Loopback and Unencrypted IPSEC](#)

Captures above IPv4/IPv6 layer using Windows Filte...

[Pre-Encryption for HTTPS](#)

Capture HTTPS client-side unencrypted traffic by usi...

[Message Analyzer Training Videos](#)

Thursday, April 21, 2016

Come learn how to use Message Analyzer using these instructional videos, available at <http://aka.ms/MAVideos>.

[Message Analyzer 1.4 has released](#)

Monday, March 28, 2016

We are proud to announce the release of Microsoft Message Analyzer v1.4. You can upgrade by clicking Check for Updates in the Help menu or by clicking this News link to display the Message Analyzer Download page.

For more details on new features and updates, see the blog <https://blogs.technet.com/MessageAnalyzer>. Enjoy!

[Blog: Using PowerShell for Text Log Parsers](#)

Friday, August 21, 2015

Learn how to use PowerShell to easily automate parsing log files and saving as a .matp file to open in Message Analyzer!

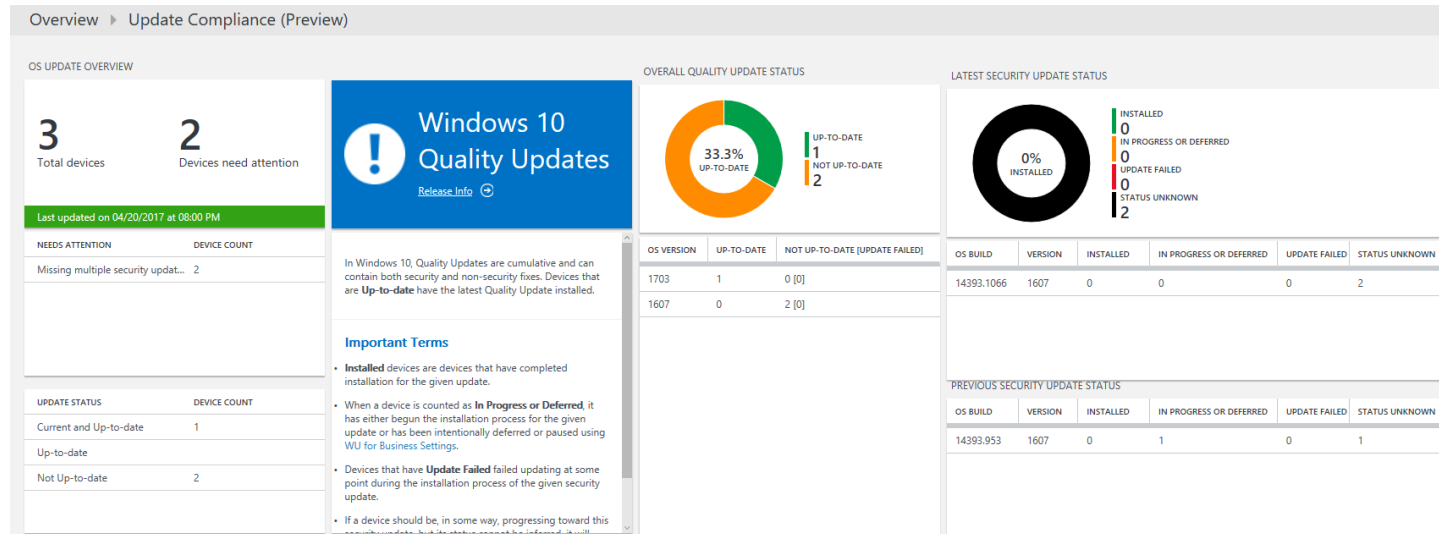
[Message Analyzer v1.3.1 Update Released](#)

Wednesday, August 5, 2015

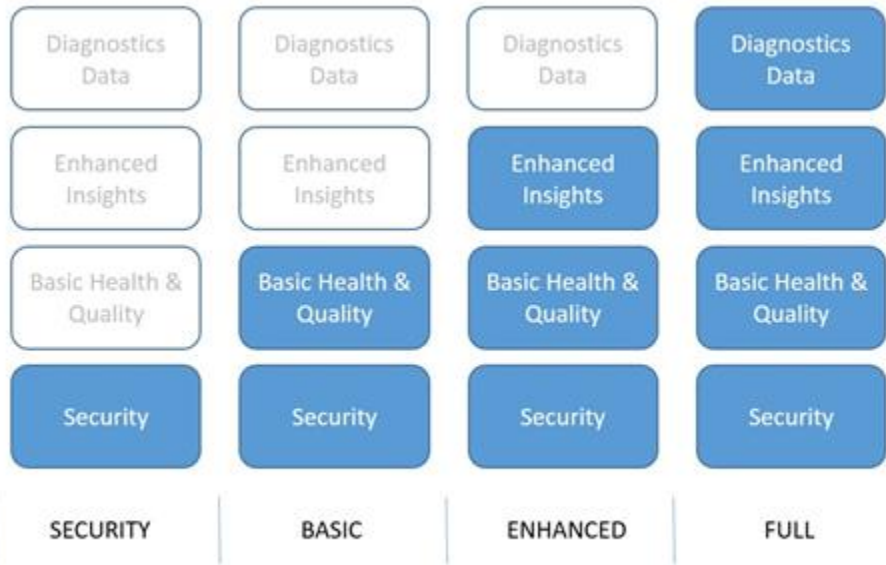
We've released an update of Message Analyzer which includes improvements based on the telemetry and feedback data we've received.

Windows Analytics

- Upgrade Readiness
- Update Compliance



Telemetry level



User Settings configurable
Admin Management configurable

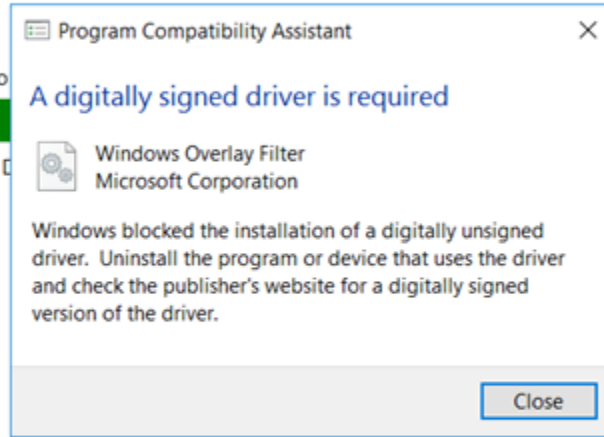
- Security (only Enterprise & Education) Minimum setting
- Basic
 - Upgrade Analytics
 - Update Compliance
- Enhanced
- Full
 - Insider preview

Windows 10 - 1703 ADK

Installing features...

- ADK 1703
följer i
använd
med S
- .NET Framework
eller e
OSDBa

Overall progress: 64% complete
Installing Configuration D



stiner i den,
stallera och
eller senare

, medvetet

<https://www.microsoft.com/Windows/10/updates/knownissues/7-a82d-7700-4000-0000-000000000000/windows-10-version-1703-april-2017/1010111-wuk>

[7-a82d-7700-4000-0000-000000000000/windows-10-version-1703-april-2017/1010111-wuk](https://www.microsoft.com/Windows/10/updates/knownissues/7-a82d-7700-4000-0000-000000000000/windows-10-version-1703-april-2017/1010111-wuk)

Drivrutinssignering i Windows 10 - 1607

Starting with new installations of Windows 10, version 1607, the previously defined driver signing rules will be enforced by the Operating System, and Windows 10, version 1607 will not load any new kernel mode drivers which are not signed by the Dev Portal. OS signing enforcement is only for new OS installations; systems upgraded from an earlier OS to Windows 10, version 1607 will not be affected by this change.

What are the exact exceptions? Are cross-signed drivers still valid?

Enforcement only happens on fresh installations, with Secure Boot on, and only applies to new kernel mode drivers:

- PCs upgrading from a release of Windows prior to Windows 10 Version 1607 will still permit installation of cross-signed drivers.
- PCs with Secure Boot OFF will still permit installation of cross-signed drivers.
- Drivers signed with an end-entity certificate issued prior to July 29th, 2015 that chains to a supported cross-signed CA will continue to be allowed.
- To prevent systems from failing to boot properly, boot drivers will not be blocked, but they will be removed by the Program Compatibility Assistant. Future versions of Windows will block boot drivers.

Övrigt

- Windows ATP massor med nya funktioner
- Powershell prompt ersätter Commando Prompt
- Hyper-V, DPI scaling, flera funktioner fått stora förbättringar

<https://blogs.technet.microsoft.com/windowsitpro/2017/04/05/whats-new-for-it-pros-in-the-windows-10-creators-update/>

Windows 10 1703 resurser

- Windows 10 1703 .ADMX templates finns här
<https://www.microsoft.com/en-us/download/details.aspx?id=55080>
- Group Policy Settings Reference for Windows and Windows Server
<https://www.microsoft.com/en-us/download/details.aspx?id=25250>

- Windows 10 1703 VLSC media släpps den 1:e Maj

Windows as a service WaaS: Implementation av Windows

Windows Insider Preview Branch

Testa nya funktioner
Utvärdering
Reommendation:Slow ring

Bör testas på test datorer ,
sekundära datorer och ej
domän anslutna datorer



Current Branch

Implementera till utvalda resurser
inom organisationen
Testa och preparera för den
breda utrullningen

Tidiga användare,
Pilotprogram,
IT avdelningar samt utvalda
resurser.



Current Branch for Business



Rekommenderad gren att
rulla ut i produktion

Long Term Servicing Branch



Tänkt för specialsystem

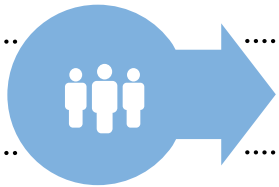
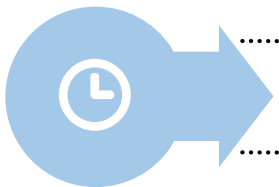
Rulla ut till kritiska system som
inte behöver nya funktioner av
någon typ. Oftast till system som
gör en sak och inget annat.

Windows as a service WaaS: Tidslinje för uppdateringar

Windows Insider
Preview Branch

Windows Current
Branch

New Windows 10
Release CBB



Släpp av specifika funktioner
Utvärdera nya funktioner
Kompetens

Förbereda infrastruktur
Implementera till Early
Adopters
Applikationstester

Rekommenderad gren att rulla i
Produktion

Utvärdera

Vefiera

Rulla ut / använd

Period för
avveckling

6+ månader av aktiv
utveckling

~4 månader

12+ månader

60
dagar

16+ månader att utvärdera och rulla ut ny version

Processen repeteras

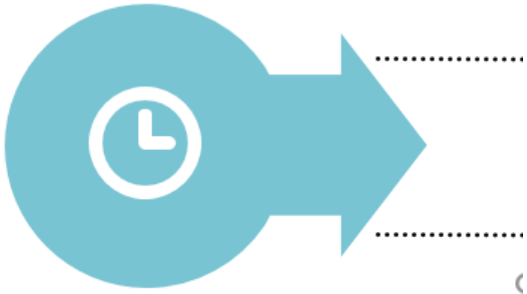
Utvärdera

Vefiera

Rulla ut / använd

Technical preview

Windows Insider Preview Branch



Släpp av specifika funktioner
Utvärdera nya funktioner

- Endast test datorer, sekundära datorer
- Utvärdera nya funktioner
- Bevaka
- Skaffa kompetens

Current Branch

Windows Current Branch



Förbereda infrastruktur

Implementera till Early Adopters

Applikationstester

- IT sätter sig in i nya funktioner i 1703
- Förbereda infrastruktur
 - Uppdatera .ADMX filer + GPO:er
 - Tredjeparts antivirus, diskryptering
 - VPN
- Förbereda uppgraderingssätt
- Information
- Applikationstester

Current Branch for Business

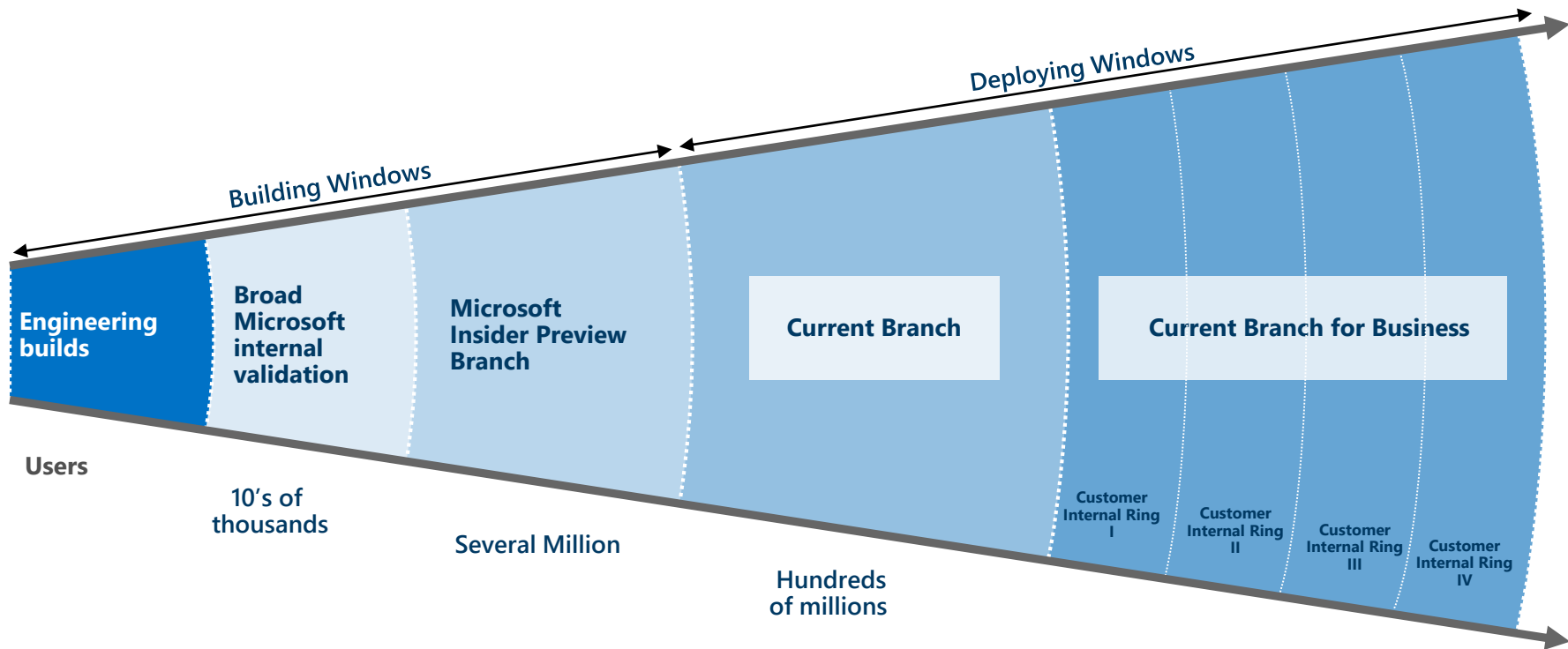
New Windows 10
Release CBB



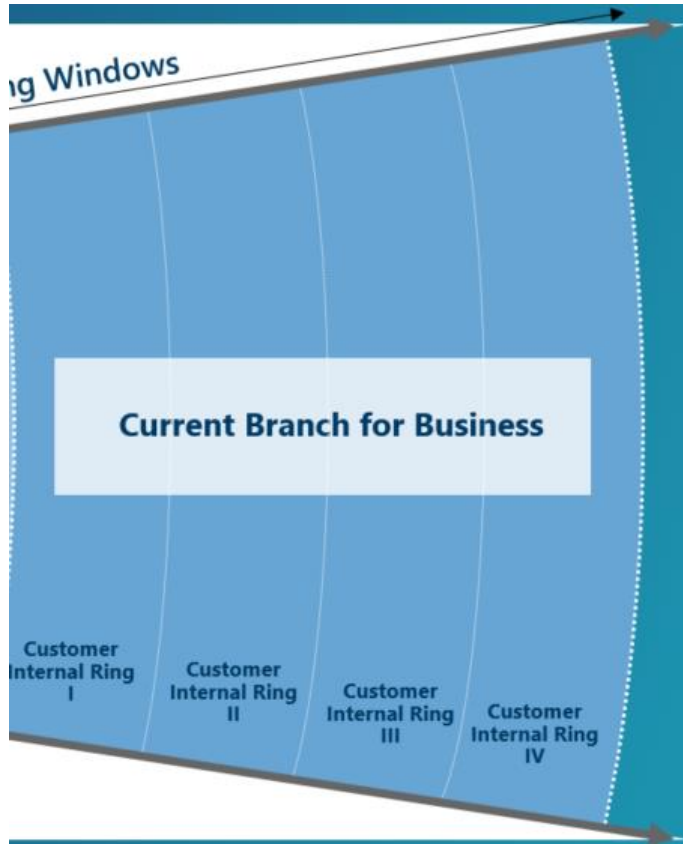
Rekommenderad gren av eKlient
att rulla ut till Landsting och
kommun

- Kommunikation
- Utrullning per ring

Windows as a Service Branches Overview



*Conceptual illustration only



CB (Bygga+Test+Applikationstest)

- Ring 1 = IT + Early Adopters
- Ring 2 = Systemägare + Applikationsförvaltare
- Ring 3 = Verksamhetspecialister

CBB (Utrullning)

- Ring 4 = xx % i Produktion
- Ring 5 = xx % i Produktion
- Ring 6 = xx % i Produktion

I varje ring behövs praktiskt indelning:

- Administrativa PC uppgradera när det passar
- Funktionsdatorer, uppgraderas nattetid?
- 24x7 datorer hur skall de hanteras, planeras

System Center User Group



www.scug.se



www.youtube.com/scugse



[#scugse](https://twitter.com/scugse)